

Southfield Farm Caravan Park

COVID-19 What's Changed?

Updated June 28th 2020

It is wonderful to be able to welcome everybody back to the park. However, as you would expect, there have been some changes and some new rules. Hopefully, these will be temporary, but it is important that we all follow them for now.

Symptoms of COVID-19

- Please do not travel to the park if you or any of your household have any symptoms of COVID-19, (fever, cough or loss of taste or smell).
- If you have symptoms while staying at the park, you should immediately self-isolate where you are to minimise any risk of transmission and organize a test. Please inform the office if practical.
- If the test is positive then you should make immediate arrangements to return home, if you can, using private transport (only drive yourself if safe).
- Other people staying in the same caravan should also self-isolate. If your test is positive, then everyone should return home.
- You can also ring 111 for further advice or go to <https://www.gov.uk/coronavirus>

NHS Test and Trace

As we move forward it is especially important that we all co-operate with the NHS Test and Trace program. Therefore can you all ensure that we have a current telephone number for you (preferably mobile) and that you keep a record of everybody staying in your caravan or visiting your caravan in case their contact details are needed.

General

- Everybody needs to stay in their family/household groups as much as possible
- Visitors to the park are only allowed in line with government guidance.
- Social distancing (using current government advised distance) must always be maintained with anybody outside your family/household group.

Office

- Only one customer is allowed in the office at any one time.
- Please respect social distancing in the office
- You will notice that plastic screens have been installed and PPE is available for the staff if needed.
- **All payments must be made by credit/debit card. Cash is no longer accepted**

Thank you for your co-operation and let's all enjoy the rest of the season.

Staying Alert and Safe from July 4th 2020

Here is the UK Government Official Advice on Social Distancing

- you can meet in groups of up to two households (your support bubble counts as one household) in any location - public or private, indoors or outdoors. You do not always have to meet with the same household - you can meet with different households at different times. However, it remains the case - even inside someone's home - that you should socially distance from anyone not in your household or bubble. This change also does not affect the support you receive from your carers
- when you are outside you can continue to meet in groups of up to six people from different households, following social distancing guidelines
- those who have been able to form a support bubble (i.e. those in single adult households) can continue to have close contact as if they live with the other people in the bubble, but you should not change who you have formed a support bubble with
- additional businesses and venues, including restaurants, pubs, cinemas, visitor attractions, hotels, and campsites will be able to open - but we will continue to keep closed certain premises where the risks of transmission may be higher
- other public places, such as libraries, community centres, places of worship, outdoor playgrounds and outdoor gyms will be able to open
- you can stay overnight away from your home with your own household or support bubble, or with members of one other household (where you need to keep social distancing)
- it will be against the law to gather in groups larger than 30 people, except for a limited set of circumstances to be set out in law. Police will have the power to break up groups larger than 30, apart from these exceptions

Moving forward, from 4 July, people will be trusted to continue acting responsibly by following this and related guidance, subject to an upper legal limit on gatherings (as described above). The overwhelming majority of the British public have complied with the regulations, and the wider guidance on how to keep themselves and their friends and family as safe as possible. Taking this into account, we trust people to continue acting responsibly, and to follow the guidance on what they should and should not do.

These changes will reopen much of society and the economy, but it is essential that everyone in the country goes about their lives in a manner which reduces the risk of transmission, whether they are at work, leisure, or using public services. When you leave your home, you should follow the guidelines on [staying safe outside your home](#). You should continue to avoid close contact and remain socially distant from anyone you do not live with or who is not in your support bubble - even inside other people's homes.

You should wash your hands regularly. This will help to protect you and anyone you come into contact with and is critical to keeping everyone safe.



HM Government



Test and Trace

We're really pleased to be able to re-open and we want to be able to stay open so we're introducing new measures to help keep everyone safe.

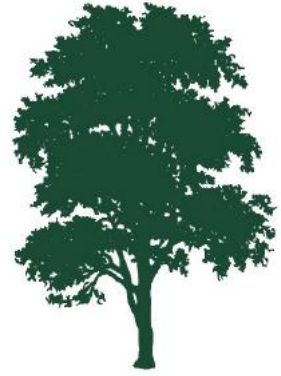
We hold contact details for all our caravan owners and, if asked, we will provide them to NHS Test and Trace unless you ask us not to. Please ensure that the telephone numbers we have for you are up to date (mobile preferred) and that you keep a record of anyone staying in your caravan or visiting.

Please be reassured that your information will continue to be stored securely, in line with data protection laws, and will not be shared with anyone else.

We are doing this to help reduce the risk of any local outbreak - by sharing your information NHS Test and Trace can quickly identify people who have come into contact with someone who has tested positive for COVID-19 and ask them to take the necessary precautions.

ENJOY
Summer
SAFELY

Selling a private static caravan during the COVID-19 pandemic



Due to the pandemic, extra measures should be taken to help keep everyone safe. The following measures have been provided by the BH&HPA as guidance on how to safely carry out a viewing of a caravan:

- ◆ Wherever possible, initial viewings should be done virtually
- ◆ You should ask whether any party is showing symptoms or has been asked to self-isolate before going ahead with any viewing
- ◆ You should ventilate the caravan for as much time as possible
- ◆ You should open the caravan completely including all external doors and windows and wedging internal doors to permit full ventilation for one hour before each viewing
- ◆ You should only perform viewings by appointment and schedule viewings to allow one hour between visits for ventilation
- ◆ You should prepare your caravan with all internal and external doors fixed/wedged open to avoid the need for hand contact
- ◆ You should provide hand sanitiser (or disposable gloves) to buyers and ask that they avoid touching any surfaces
- ◆ You should restrict the number of people on a viewing to only those in the immediate household of the buyer, so that social distancing can be practised
- ◆ You should ensure you maintain social distancing and do not enter the caravan with the viewers
- ◆ You should clean the caravan after each viewing, making sure to cover commonly touched surfaces



Valid 2020

COVID-19 Industry Standard

In Partnership with;

The National Tourist Organisations of Great Britain and Northern Ireland

In recognition that this business has confirmed that they have followed government and industry COVID-19 guidelines, ensuring processes are in place to maintain cleanliness and aid social/physical distancing.



Staying COVID-19 Secure in 2020

We confirm we have complied with the government's guidance on managing the risk of COVID-19

● FIVE STEPS TO SAFER WORKING TOGETHER ●

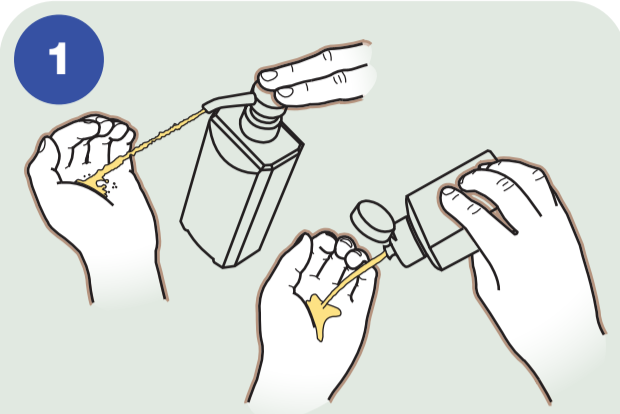
- ✓ We have carried out a **COVID-19 risk assessment** and shared the results with the people who work here
- ✓ We have **cleaning, handwashing and hygiene procedures** in line with guidance
- ✓ We have taken all reasonable steps to **help people work from home**
- ✓ We have taken all reasonable steps to **maintain a 2m distance** in the workplace
- ✓ Where people cannot be 2m apart, we have done everything practical to **manage transmission risk**

Employer _____ Date _____

Who to contact: _____ Your Health and Safety Representative
(or the Health and Safety Executive at www.hse.gov.uk or 0300 003 1647)

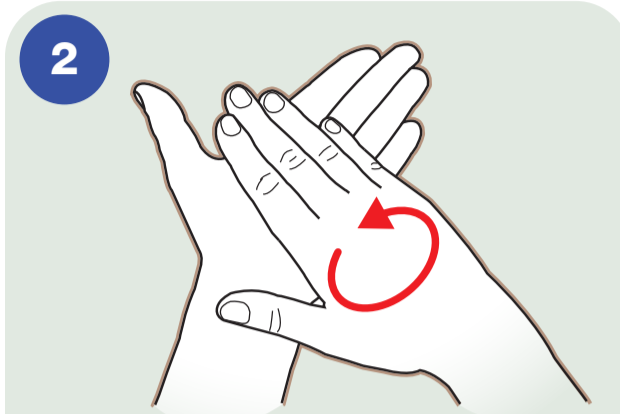


Best Practice: How to handrub step by step images



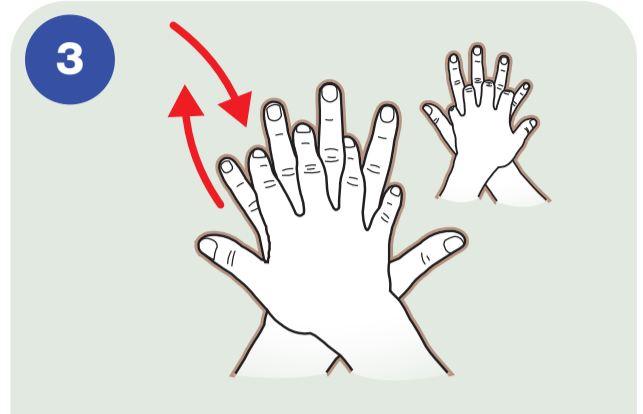
1

Apply a palmful of the product in a cupped hand and cover all surfaces.



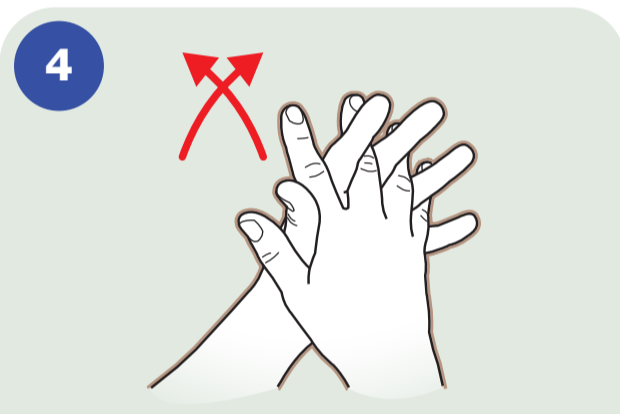
2

Rub hands palm to palm.



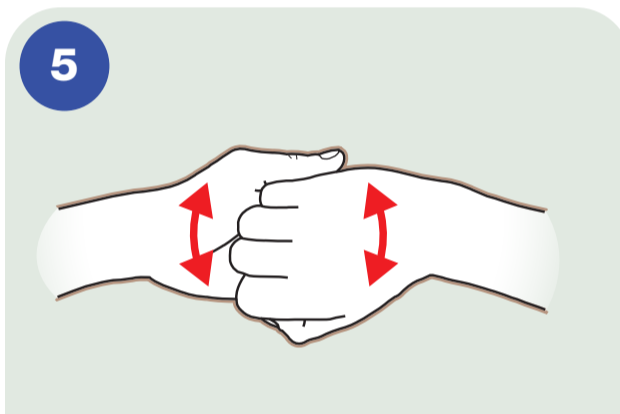
3

Right palm over the back of the other hand with interlaced fingers and vice versa.



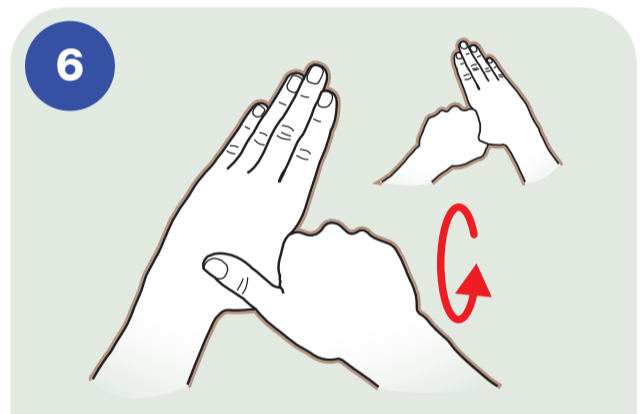
4

Palm to palm with fingers interlaced.



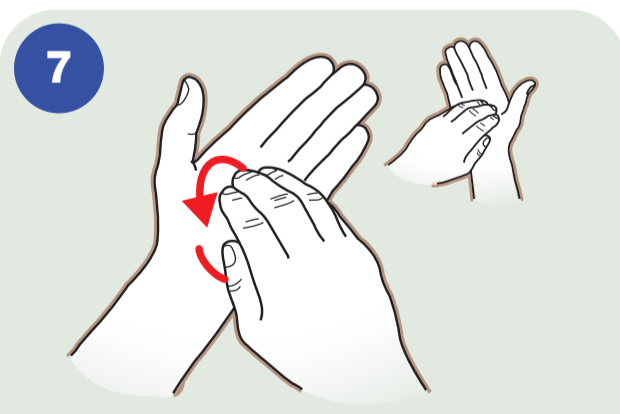
5

Backs of fingers to opposing palms with fingers interlocked.



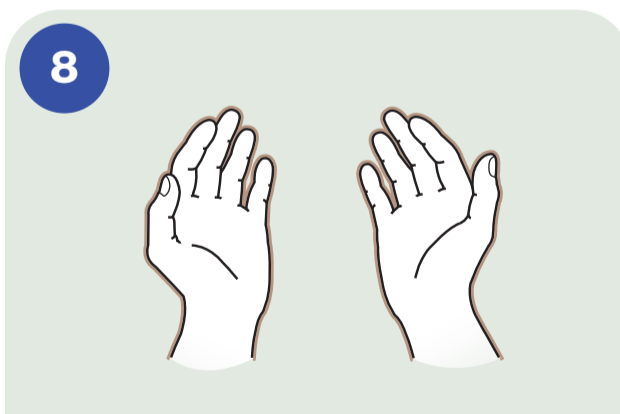
6

Rotational rubbing of left thumb clasped in right palm and vice versa.



7

Rotational rubbing, backwards and forwards with clasped fingers of right hand in left palm and vice versa.

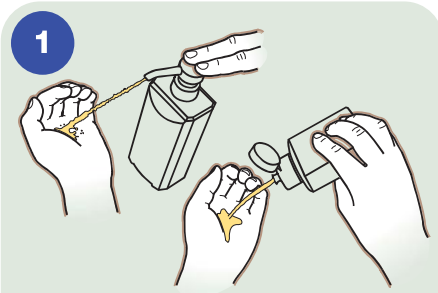


8

Once dry, your hands are safe.

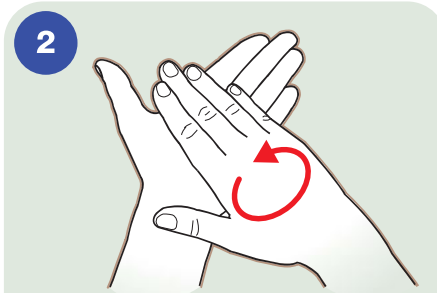


Best Practice: How to handrub step by step images



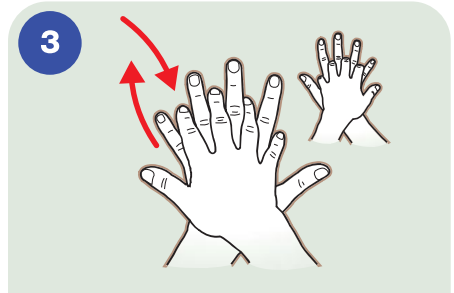
1

Apply a palmful of the product in a cupped hand and cover all surfaces.



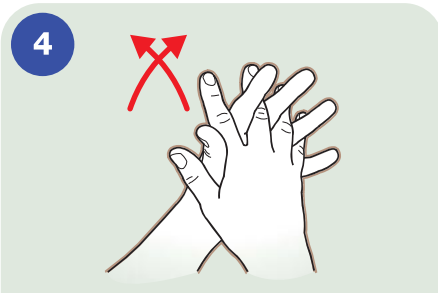
2

Rub hands palm to palm.



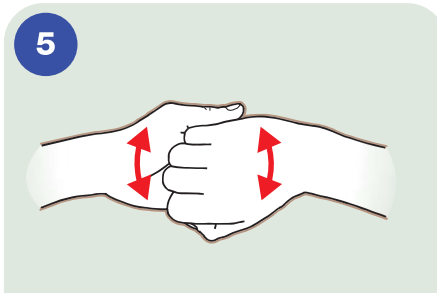
3

Right palm over the back of the other hand with interlaced fingers and vice versa.



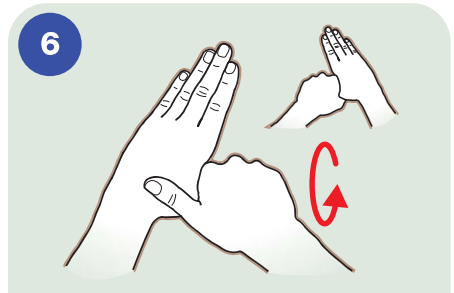
4

Palm to palm with fingers interlaced.



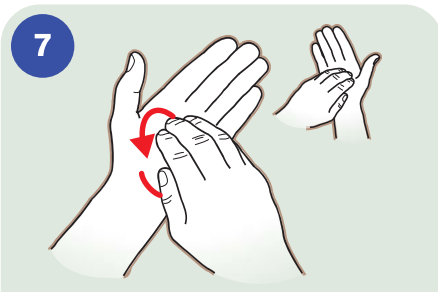
5

Backs of fingers to opposing palms with fingers interlocked.



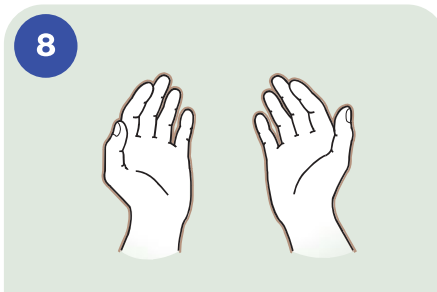
6

Rotational rubbing of left thumb clasped in right palm and vice versa.



7

Rotational rubbing, backwards and forwards with clasped fingers of right hand in left palm and vice versa.



8

Once dry, your hands are safe.